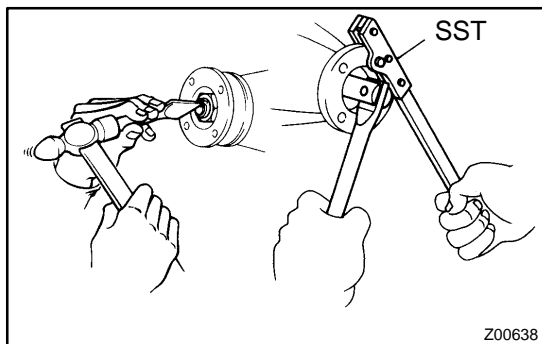


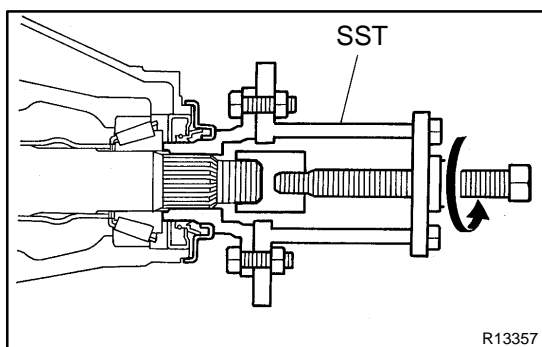
REPLACEMENT

1. DRAIN DIFFERENTIAL OIL
2. DISCONNECT REAR PROPELLER SHAFT
2WD: See page [PR-3](#)
4WD: See page [PR-10](#)

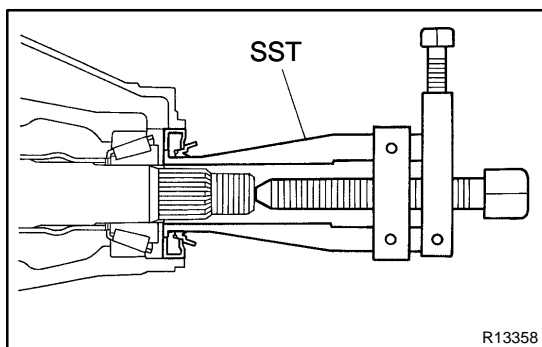


3. REMOVE COMPANION FLANGE

- (a) Using a chisel and hammer, loosen the staked part of the nut.
- (b) Using SST to hold the flange, remove the nut.
SST 09330-00021

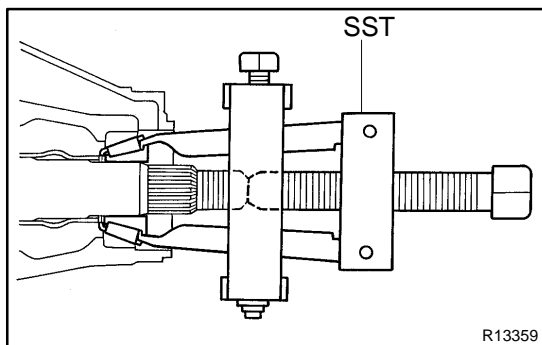


- (c) Using SST, remove the companion flange.
SST 09950-30012 (09951-03010, 09953-03010, 09954-03010, 09955-03030, 09956-03050)



4. REMOVE OIL SEAL

- Using SST, remove the oil seal.
SST 09308-10010



5. REMOVE FRONT BEARING

- Using SST, remove the front bearing from the drive pinion.
SST 09556-22010

6. REMOVE BEARING SPACER

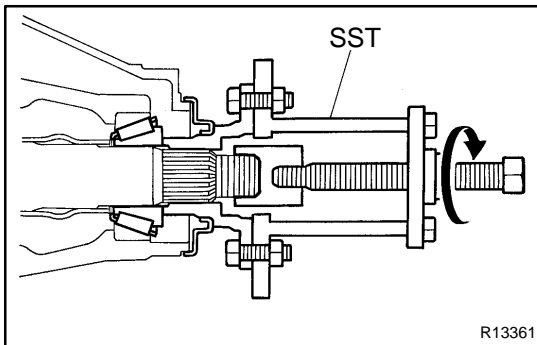
- (a) Remove the 2 washers.
- (b) Remove the bearing spacer.

7. INSTALL NEW BEARING SPACER

- (a) Install a new bearing spacer.
- (b) Install the 2 washers.

8. INSTALL FRONT BEARING

- (a) Place the front bearing.

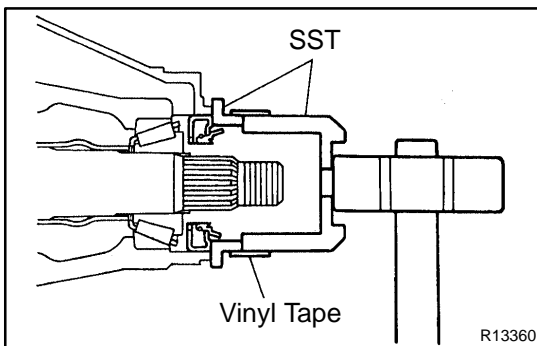


- (b) Using SST and the companion flange, install the front bearing then remove the companion flange.

SST 09950-30012 (09951-03010, 09953-03010, 09954-03010, 09955-03030, 09956-03050)

9. INSTALL NEW OIL SEAL

- (a) Coat a new oil seal lip with MP grease.



- (b) Using SST and a plastic hammer, install the oil seal until its surface is flush with the differential carrier end.

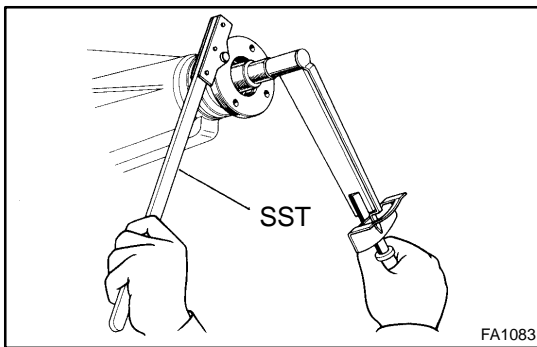
SST 09316-12010, 09649-17010

HINT:

Connect the 2 SST with vinyl tape.

10. INSTALL COMPANION FLANGE

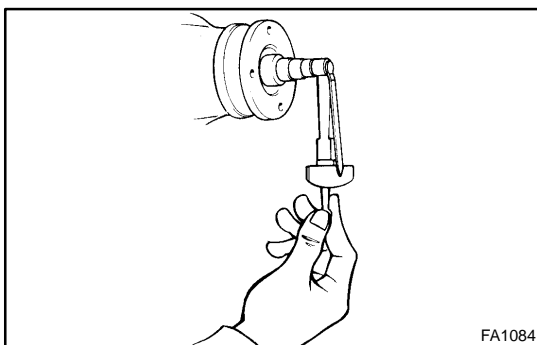
- (a) Place the companion flange on the drive pinion.
(b) Coat the threads of a new nut with hypoid gear oil.



- (c) Using SST to hold the flange, torque the nut.

SST 09330-00021

Torque: 147 N·m (1,500 kgf·cm, 109 ft·lbf)

**11. ADJUST DRIVE PINION PRELOAD**

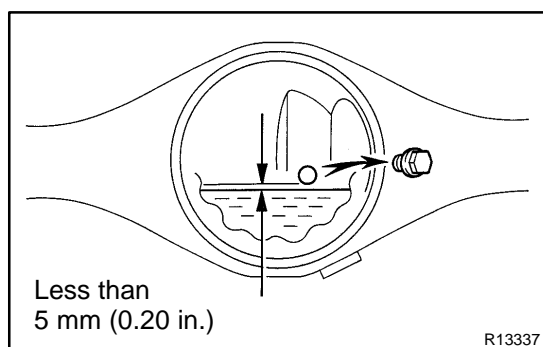
w/o LSD: See page [SA-112](#)

w/ LSD: See page [SA-133](#)

12. STAKE DRIVE PINION NUT**13. CONNECT REAR PROPELLER SHAFT**

2WD: See page [PR-8](#)

4WD: See page [PR-15](#)

**14. FILL DIFFERENTIAL WITH HYPOID GEAR OIL****Torque: 49 N·m (500 kgf-cm, 39 ft-lbf)****Oil type:**

w/o LSD	Hypoid gear oil API GL-5
w/ LSD	Hypoid gear oil for LSD API GL-5

Recommended oil viscosity:

Standard type	SAE 75W – 140
LSD type	Above – 18 °C (0 °F) SAE 90 Below – 18 °C (0 °F) SAE 80W or 80W – 90

Capacity:

Differential type	Capacity
Standard type 2WD	
Standard Cab and Access Cab:	3.80 liters (4.02 US qts., 3.34 Imp. qts.)
Double Cab	4.00 liters (4.23 US qts., 3.52 Imp. qts.)
4WD	
Standard Cab and Access Cab:	3.50 liters (3.70 US qts., 3.08 Imp. qts.)
Double Cab	4.00 liters (4.23 US qts., 3.52 Imp. qts.)
LSD type 2WD	
Standard Cab and Access Cab:	3.15 liters (3.33 US qts., 2.77 Imp. qts.)
Double Cab	3.35 liters (3.54 US qts., 2.95 Imp. qts.)
4WD	
Standard Cab and Access Cab:	2.85 liters (3.01 US qts., 2.51 Imp. qts.)
Double Cab	3.35 liters (3.54 US qts., 2.95 Imp. qts.)